




MATERIAL AND FINISH:
 Insulator: Polycarbonate, UL-94V-0 rated
 Contacts: Brass, Nickel plated

ELECTRICAL SPECIFICATIONS:
 Inlet Current rating: 10 A 
 Fuse Holder Current rating: 6A  10A 
 Voltage rating: 250 VAC
 Insulation resistance:
 100 Mohm min. at 500 VDC
 Dielectric withstanding voltage:
 2000 VAC for one minute

ORDERING CODE:

42R31-2 $\frac{1}{1}$ $\frac{1}{2}$


1) COLOR

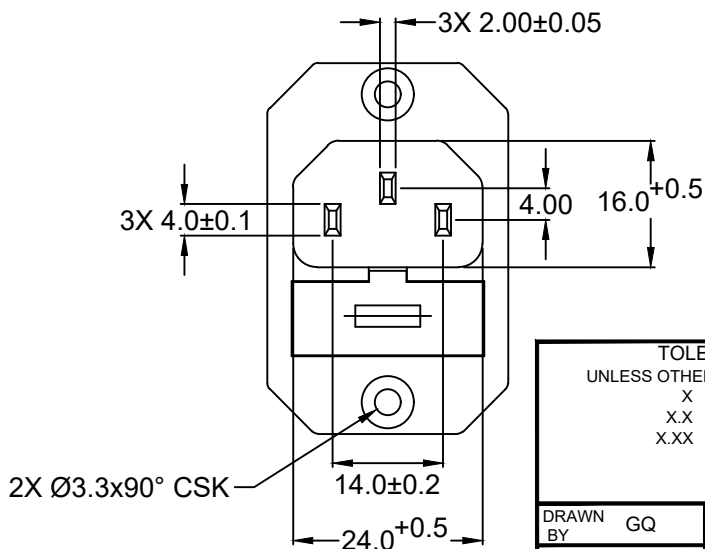
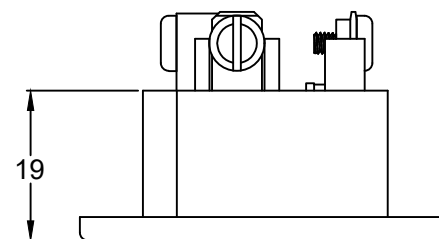
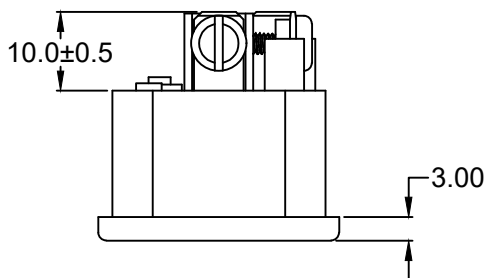
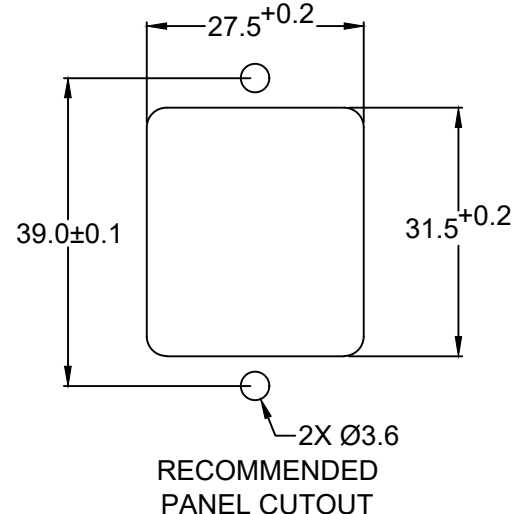
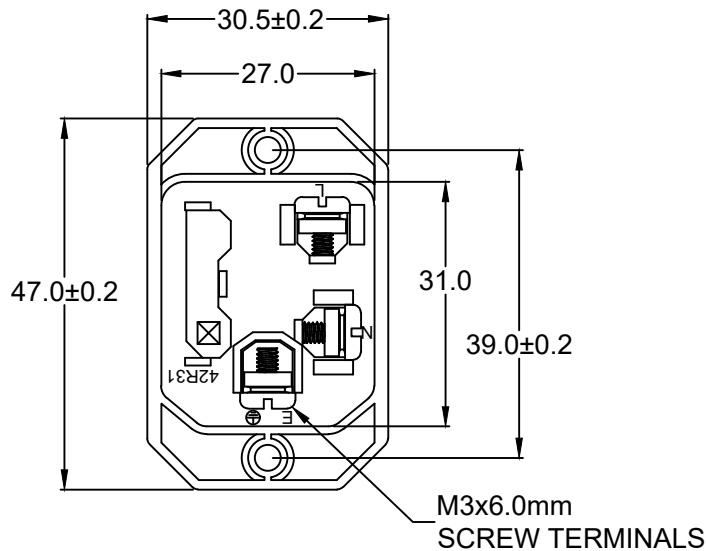
- 1 = BLACK
- 2 = GRAY

2) ELECTRICAL CIRCUIT CONFIGURATION

1 = 10A 250V 70°C
 2+GROUND 

2 = 10A 250V 120°C
 2+GROUND 

4 = 10A 250V 70°C
 2 POLE 



RoHS
 COMPLIANT

TOLERANCE UNLESS OTHERWISE SPECIFIED	
X	± 1
X.X	± 0.4
X.XX	± 0.20
DRAWN BY	GQ
CHECK BY	TD
APPR BY	PB
DATE:	08/30/01
DATE:	09/06/01
DATE:	09/06/01

Power Dynamics, Inc.
 Phone: 973 560-0019 Whippany, New Jersey Fax: 973 560-0076

PART: IEC 60320 SINGLE FUSE HOLDER APPL. INLET
 SCREW TERMINALS; CROSS FLANGE

PART #: 42R31-2X1X		SHEET 1 of 1
SIZE: A	ALL DIMENSIONS FOR REFERENCE ONLY DIMENSIONS ARE IN MILLIMETERS	REV: A
SCALE: NTS		

REVISIONS	CHANGE	CHK	CHK	APPR
REV	DATE	BY	DATE	BY
A	12/15/21			